



ZEBRA
CAPTURE YOUR EDGE

Getting Back To Work With Retail That's Right For The Times

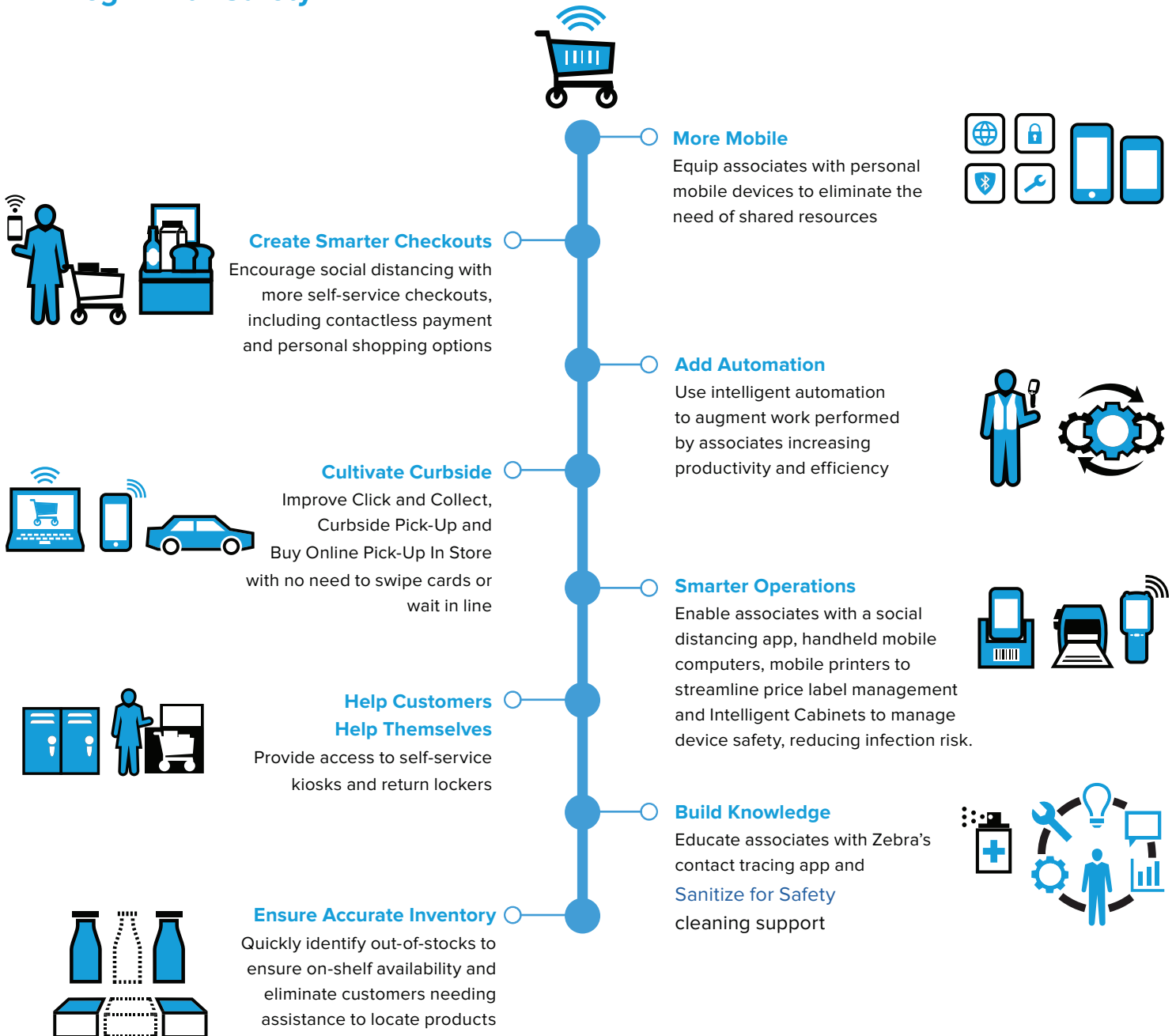
Innovating retail for customer and associate safety—You've got this

Enable efficient, contactless and convenient customer experiences with Zebra

Retail has changed dramatically in an unprecedented amount of time. It's a brave new world, and you must adapt to today's mandates for increased health and safety for both customers and associates. Today, customers still expect a quick, frictionless shopping experience but with minimal associate contact. Now is the time to create safe and positive customer experiences without sacrificing service, while re-strategizing and executing your operations.

Let's work together to identify the right retail technology solutions for your business. Let's elevate the customer experience, enhance customer and associate safety and find new ways of working and engaging with shoppers.

Begin with Safety



You've Got This With Zebra Retail Solutions

Handheld Mobile Computers and Tablets

Empower your associates with real-time visibility that simplifies inventory counts, reduces out of stocks, enables remote task allocation, and systematizes Click and Collect online orders, picking and curbside delivery.

Mobile Printers

Generate price labels, tote labels and sales receipts on the spot for customer deliveries, in-store, or curbside pick-ups. With rugged reliability for maximum uptime, they are compact, lightweight, easy to operate and manage while facilitating social distancing by limiting the need to use a central, shared printer.

Workforce Connect Powered by Zebra Savanna™

Leverage the same Zebra device that provides access to enterprise data and applications with a suite of communication and collaboration tools that enables Push to Talk, PBX calls and enterprise-class secure messaging, as well as helping associates comply with social distancing guidelines while working together.

Zebra SmartSight™

Use automated data-driven intelligence and prescriptive corrective actions in real time to keep shelves stocked, items properly priced, presented and assorted, and your store associates better utilized. And with Zebra's SmartSight CARE™ (Contactless Assessment & Review Engagement), you can advance your intelligent automation strategy virtually to ensure the safety for all employees engaged.

Zebra SmartLens™

Turn your store into a smart store that automatically senses and records the location and movement of virtually everything including merchandise, associates, shoppers and assets-and turn that data into easy-to-read actionable intelligence.

Zebra MotionWorks® Proximity

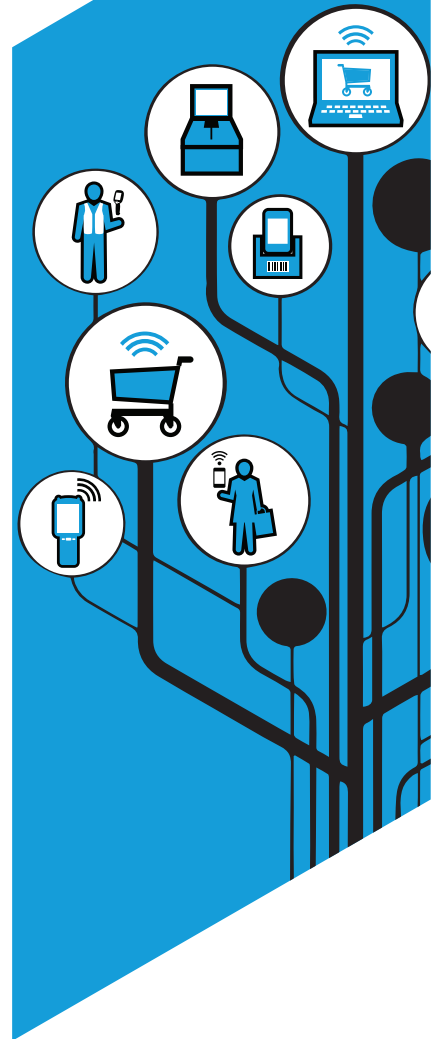
Manage contact tracing and help associates reduce risks of exposure. MotionWorks® Proximity reminds associates to maintain social distancing, while also creating a record of proximity events for reporting purposes.

Zebra Intelligent Cabinets

Zebra-validated cabinets, racks, cradle locks and customized carts automate and optimize how your enterprise mobile devices are stored, accessed, and tracked to increase contactless device management and harness the most efficient use of devices and workers.

Zebra Independent Software Vendors (ISV)

Zebra's global ISV network offers innovative applications developed to work with Zebra solutions to address your unique needs.



For more information, visit zebra.com/retail



ZEBRA and the stylized Zebra head are trademarks of Zebra Technologies Corp., registered in many jurisdictions worldwide. All other trademarks are the property of their respective owners. ©2020 Zebra Technologies Corp. and/or its affiliates. All rights reserved. 06/18/2020



(847) 310-4200
www.iwcr.com